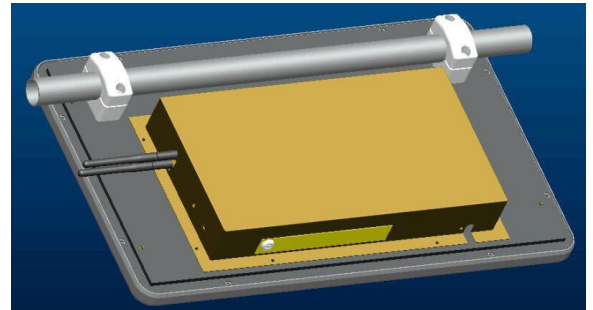


latech Bus Digital Signage LCD Display is a narrow-frame, Slim LCD Digital Signage player, it consists a LCD display integrated with network media player, which is based on LIDS100 Management software. It is featured with simple installation, centralized management, web-based management software, etc.

Latech was able to build a reliable solution that met power supply issues on the bus. Bus LCD Digital Signage Player is able to communicate with the server via Wireless Network such as WiFi, 3G/4G network. The contents downloaded from the wireless network from the server to the SD Card inside the player for local display.



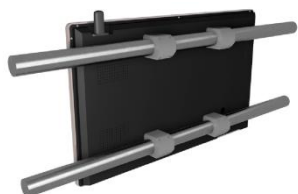
## Features

- **Network: LAN & WiFi Connection Default; Built-in 3G/4G/5G module**
- **Power On/Off Delay**
- **Shake-proof with Robust Metal Case**
- **Dual Screen Synchronization via 1080P Quality**
- **Aviation-class Plug Connect to each LCD screen**
- **Pole / Top Mounting**

Model		LJ-19	LJ-22	LJ-24	LJ-32
LCD	LCD Size	19 Inches	22 Inches	24 Inches	32 Inches
	Display Resolution	1366*768	1920*1080	1920*1080	1366*768
	Aspect Ratio	16:9			
	Brightness	250 cd/m <sup>2</sup>	250 cd/m <sup>2</sup>	250 cd/m <sup>2</sup>	350 cd/m <sup>2</sup>
	Contrast	1000:1	3000:1	3000:1	3000:1
	Color	16.7M	16.7M	16.7M	16.7M
	Response Time	5ms	5ms	5ms	5ms
	Backlight Life Cycle	≥50,000 hours			
	Viewing Angle	178° / 178° / 178° / 178°			
Content	Type	Video / Audio / Picture/ Text / RSS / Web / Logo /PDF/Weather/Date/Time...			
	Video	MOV, AVI, MP4, DVD, ASF, WMV, RM, RMVB, MPEG, VOB,MKV,FLV			
	Audio	MP3,WMA,AAC,OGG,FLAC,APE,AC3,DTS			
	Picture	JPEG, BMP, GIF, PNG, TIFF			
	Scrolling Message	Single line horizontal scrolling, multiple line vertical shifting			
	Portrait Mode	Support			
	Background Picture	Support			
	Multiple Zone Display	Support split-screen display			
Android	CPU	ARM Cortex-A9, Quad-core 1.6GHz			
	Memory	DDR-3, 1G			
	Storage	NAND Flash 8GB			
	Android Version	Android 4.4			
	Network	10/100 Mbps Fast Ethernet			
	Wi-Fi	Wi-Fi 802.11b/g			
	3G/4G	Built-in 3G/4G module (optional)			
	I/O ports	RJ45 x 1, USB x 2, Audio out x 1, Remote x 1, Power x 1			
Power	Consumption	30W	40W	50W	80W
	Input	DC 9 – 36V			
Performance	Working Temperature	0℃～55℃			
	Working Humidity	20%～80%			
	Storage Temperature	-20℃～65℃			
	Storage Humidity	10%～90%			
Dimensions	Net Size	466*308*49mm	543*336*49mm	600*367*49mm	763*461*50mm
	Net Weight	6Kg	7Kg	8Kg	12Kg
Others	Touch Screen	Multi-point IR touch ( optional)			
	Speaker	2 * 8Ω / 5W			
	Front Material	Tempered glass			
	Housing	Metal			
	Color	Black(default), Silver, Champagne			
	Accessories	Power cord, Remote			



◆ Dual Screen Synchronization



◆ Robust Mounting Bracket



◆ Shake-proof Metal Housing



◆ Bus Power Regulator



◆ Power On/off Delay Module

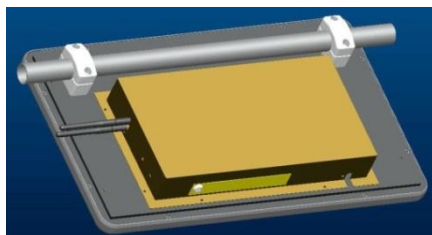


◆ Aviation-class plug connection



◆ Alternative: Media Player + Bus Monitor





**Post Mounting Solution**

**Ceiling Mounting Solution**





- Web-Based Interface
- Support Multi-User Management
- Support Unlimited Players
- Content Management System
- Playlist Scheduling
- Player Remote Control
- Statistic Data Report

## Display Effect

